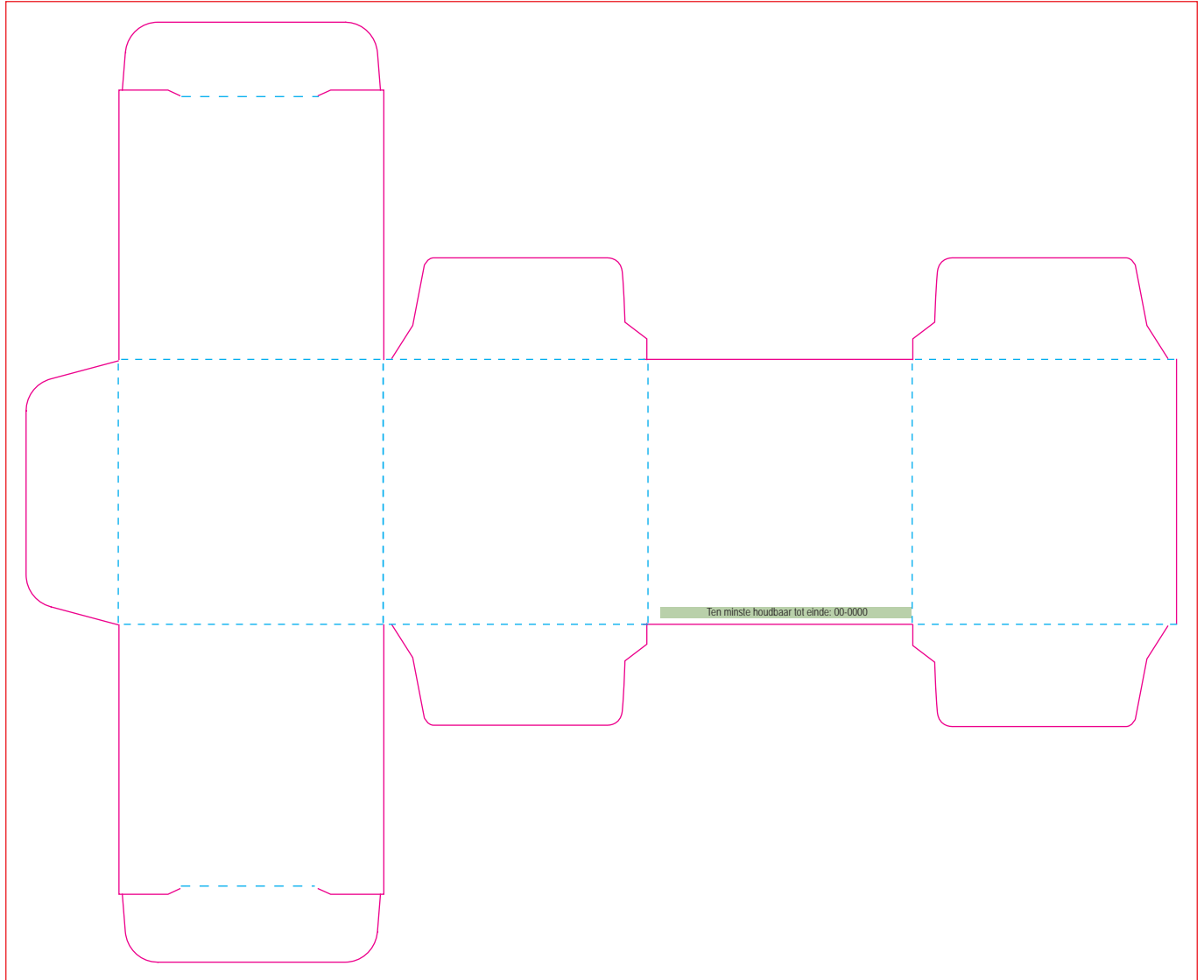


3425

8 NAPOLITAINS IN DOOSJE / BOX WITH 8 NAPOLITAINS /  
WÜRFEL MIT 8 SCHOKOLADENTÄFELCHEN

Drukformaat / print size / Druckformat / format d'impression:  
173,8 x 142 mm



NL	EN	DU	FR	
<p><b>MELKCHOCOLADE</b> Napolitain 4,5 gram Minimale cacao percentage: 31%</p> <p>Ingrediënten: suiker, cacao boter, <b>melk</b> poeder, cacao massa, emulgator: <b>soja</b> lecithine, natuurlijke vanille aroma. Geproduceerd in de EU</p> <p>TPC, Postbus 10, 7500 AA Enschede (The Netherlands)</p> <p><b>PURE CHOCOLADE</b> Napolitain 4,5 gram Minimale cacao percentage: 58,0%</p> <p>Ingrediënten: cacao massa, suiker, cacao boter, emulgator: <b>soja</b> lecithine, natuurlijk vanille aroma. Kan <b>melk</b> bevatten. Geproduceerd in de EU</p> <p>TPC, Postbus 10, 7500 AA Enschede (The Netherlands)</p>	<p><b>MILK CHOCOLATE</b> Napolitain 4,5 gram Minimal percentage of cocoa: 31%</p> <p>Ingredients: sugar, cocoa butter, full cream <b>milk</b> cocoa mass, emulsifier: <b>soy</b> lecithin, natural vanilla flavouring. Produced in EU.</p> <p>TPC, Postbus 10, 7500 AA Enschede (The Netherlands)</p> <p><b>DARK CHOCOLATE</b> Napolitain 4,5 gram Minimal percentage of cocoa: 58,0%</p> <p>Ingredients: sugar, cocoa butter, cocoa mass, emulsifier: <b>soy</b> lecithin, natural vanilla flavouring. Can contain <b>milk</b> bevatten. Produced in EU.</p> <p>TPC, Postbus 10, 7500 AA Enschede (The Netherlands)</p>	<p><b>MILCHSCHOKOLADE</b> Napolitain 4,5 Gramm Mindestanteil an Kakao: 31%</p> <p>Zutaten: Zucker, Kakaobutter, Voll <b>milch</b> pulver, Kakaomasse, <b>Soja</b> lecithine, Natürliches Vanille-Aroma. Produziert in der EU</p> <p>TPC, Postbus 10, 7500 AA Enschede (The Netherlands)</p> <p><b>DUNKLE SCHOKOLADE</b> Napolitain 4,5 Gramm Mindestanteil an Kakao: 58,0%</p> <p>Zutaten: Zucker, Kakaobutter, Kakaomasse, <b>Soja</b>lecithine, Natürliches Vanille-Aroma. Kann <b>Milch</b> enthalten. Produziert in der EU</p> <p>TPC, Postbus 10, 7500 AA Enschede (The Netherlands)</p>	<p><b>MILK CHOCOLATE</b> Napolitain 4,5 gram Minimal percentage of cocoa: 31%</p> <p>Ingrediënten: sugar, cocoa butter, full cream <b>milk</b> cocoa mass, emulsifier: <b>soy</b> lecithin, natural vanilla flavouring. Produit dans l'UE.</p> <p>TPC, Postbus 10, 7500 AA Enschede (The Netherlands)</p> <p><b>DARK CHOCOLATE</b> Napolitain 4,5 gram Minimal percentage of cocoa: 58,0%</p> <p>Ingrediënten: sugar, cocoa butter, cocoa mass, emulsifier: <b>soy</b> lecithin, natural vanilla flavouring. Can contain <b>milk</b> bevatten. Produit dans l'UE.</p> <p>TPC, Postbus 10, 7500 AA Enschede (The Netherlands)</p>	
<p><b>BEDRUKKINGS FORMAAT</b> PRINTING SURFACE BEDRUCKBARE FLACHE SURFACE D'IMPRESSIION</p>	<p><b>VOUWLIJN</b> FOLDING LINE FALZLINIE LIGNE DE PLIAGE</p>	<p><b>AFLOOP</b> BLEED BESCHNITT FOND PERDU</p>	<p><b>GEEN TEKST PLAATSEN</b> NO TEXT HERE KEIN TEXT HIER PAS DE TEXTE ICI</p>	<p><b>INGREDIËNTEN</b> INGREDIENTS ZUTATEN INGRÉDIENTS</p>